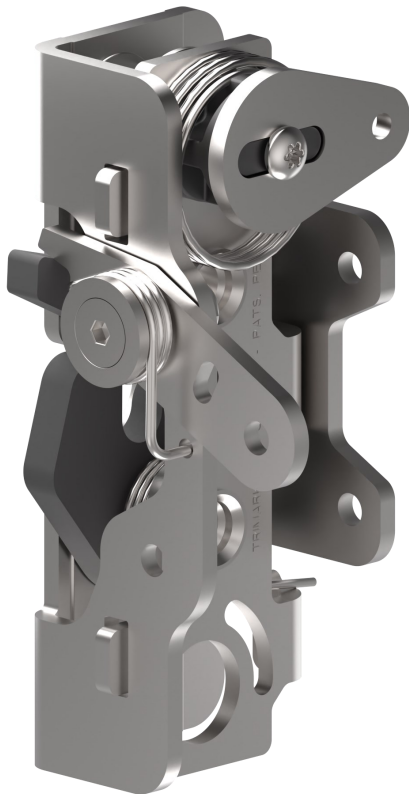


050-1910 8mm Single Rotor Latch - Single Position



TriMark's newest innovation in rotary latches features a robust modular design that offers extensive actuation locations and options providing application flexibility in a compact design. Designed for medium to heavy-duty applications for on or off-highway applications, this single position latch is designed for non FMVSS 206 (ECE R11) configurations.

DESIGNED FOR:

- Applications where it is desirable to have a single position rotary latch
- Interior door thickness of 45-57mm (1.77-2.25"). Depending on the actuator type and location the overall height could be greater. Please contact TriMark for specific details.
- Medium to heavy duty doors of 23-81 kg (50-175 lbs.) with maximum door seal pressure of 36 kg (80 lbs.)

Global Locations:

TriMark Corporation
500 Bailey Avenue
P.O. Box 350
New Hampton, Iowa 50659
United States
Tel: 641-394-3188
Fax: 641-394-2392
1-800-447-0343
www.trimarkcorp.com

TriMark Europe
Unit 3 Sence Court
Bardon Hill
Coalville
Leicestershire LE67 1GZ
United Kingdom
Tel: +44(0)1530 512460
Fax: +44(0)1530 512461
www.trimarkeu.com

TriMark (Xuzhou)
Building A5 Jingwu Road
Xuzhou Economic
Development Zone
Xuzhou, Jiangsu
221004 PR China
Tel: +86 516 8773 0018
Fax: +86 516 8773 0058
www.trimarkcn.com



TriMark. Interactive. Product. Selector



TriMark



TriMark Corporation



TriMark Corporation

MATERIAL:

- Case halves: high strength steel
- Rotor and catch: heat treated steel
- Springs: non-corrosive stainless steel

FINISH:

- Zinc plated, clear chromate steel components

INSTALLATION:

- Easy to install, mounts with (2) M8 x 1.25 class 8.8 or better fasteners are required (not included)
- Tighten to manufacturers' recommended torque value, however, do not exceed 26.0 N-m (230.1 in-lbs)

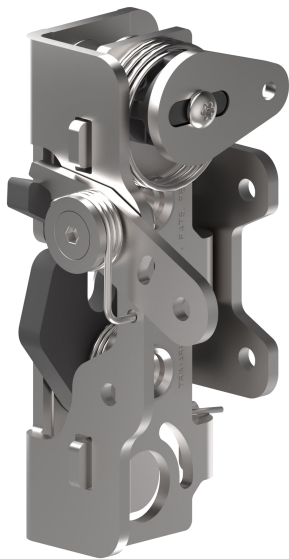
USE WITH:

- TriMark 070-1000 8mm Hoop Strike
- TriMark 070-1300 Adjustable Striker

U.S. Patent Nos. 10,676,967 / 10,697,207

Individual part dimensions are for reference only. Refer to individual part drawings for complete dimensions, specifications, and installation procedures. Engineering assistance and application drawings are available.

CAUTION: Single position rotary latches do not comply with FMVSS 206 (ECE R11) requirements

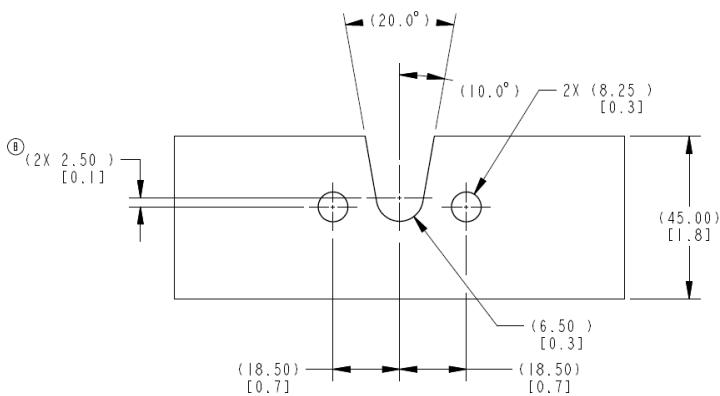


Barrel Actuation With Direct Release Cam and Top Direct Release Actuator

070-1000 8mm Hoop Strike



070-1300 Adjustable Striker



CUTOUT

ALL DIMENSION ARE FOR REFERENCE USE ONLY.

Mounting Details

Modular construction with multiple actuation points allows top/bottom actuation including stacked actuators as well as combinations of actuation points.

